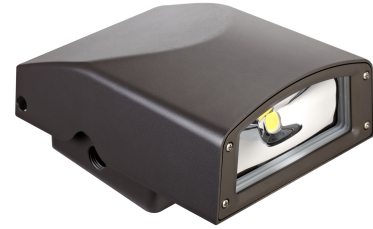


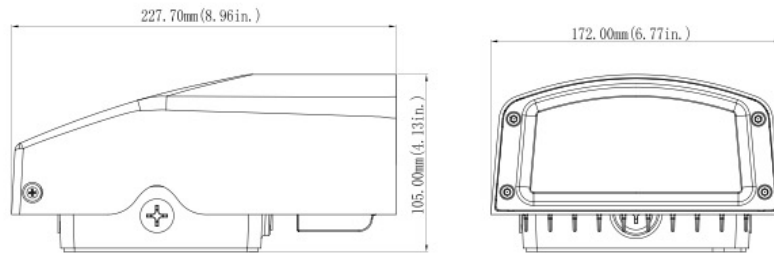
Product Description

- Sealed die-casting profile for outdoor applications
- Available with Type II and Type III photometry
- Head tilts max 20° for different lighting purpose
- Replacing 100W High-intensity discharge lamps
- Built-in UL class 2 driver, optional for photocell
- UL listed and DLC qualified
- Limited 3 years warranty (please see our website for more details)
- Ideal use for security, pathway and perimeter lighting, building entryways and walkways



Optical Parameter

Product Dimension
Unit: mm/inch



Product Details

Ordering Code	Input Voltage(VAC)	Lens Material	Wattage (W)	CCT	Beam Angle	Lumens (lm)	Rated Life(hrs.)	CRI	Power Factor	Equivalency	Certificate
WPCI40W3 4V50KD	347V	Glass	40W	5000	110	4500	50,000	75	0.9	100W	UL/cUL, DLC

Energy Efficiency

	Estimated Lighting Costs Using a Standard 100W HID Lamp	Estimated Lighting Costs Using a Yigeda 40W Cutoff Wall Pack
Present Wattage	100W	40W
x Annual Operating Hours	3650 hrs	3650 hrs
	= 365,000 Watts per year	= 146,000 Watts per year
÷ 1,000	= 365 kWh per year	= 146 kWh per year
× kWh rate (\$0.10)	= \$36.5 per year	= \$14.6 per year
× 100 lamps per space	= \$3,650 annual energy cost per space	= \$1,460 annual energy cost per space
Total Estimated Annual Energy Cost Saving Per Year		= \$2,190

This energy saving example shows an application of 100 lamps in a space currently using a 100W HID Lamp and Yigeda LED 40W Cutoff Wall Pack, operating 3,650 hours per year (10 hours per day) at a cost of \$0.10 per kWh.